

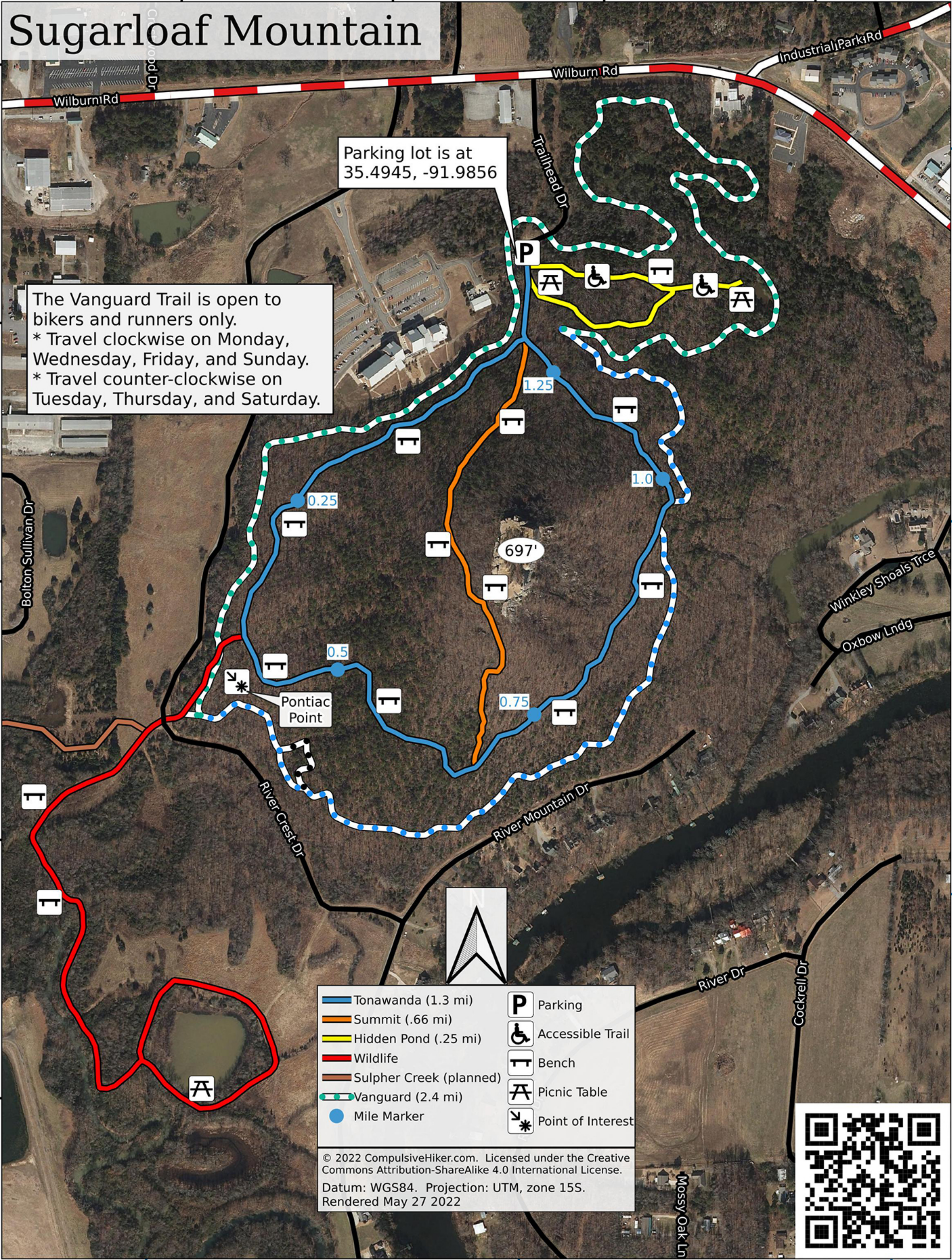
Sugarloaf Mountain

Parking lot is at 35.4945, -91.9856

The Vanguard Trail is open to bikers and runners only.
 * Travel clockwise on Monday, Wednesday, Friday, and Sunday.
 * Travel counter-clockwise on Tuesday, Thursday, and Saturday.

- | | | | |
|--|-------------------------|--|-------------------|
| | Tonawanda (1.3 mi) | | Parking |
| | Summit (.66 mi) | | Accessible Trail |
| | Hidden Pond (.25 mi) | | Bench |
| | Wildlife | | Picnic Table |
| | Sulpher Creek (planned) | | Point of Interest |
| | Vanguard (2.4 mi) | | |
| | Mile Marker | | |

© 2022 CompulsiveHiker.com. Licensed under the Creative Commons Attribution-ShareAlike 4.0 International License.
 Datum: WGS84. Projection: UTM, zone 15S.
 Rendered May 27 2022



35.496875
35.493750
35.490625
35.487500
35.484375

-91.990625 -91.987500 -91.984375 -91.981250

3928500
3928000
3927500

591500 592000 592500