

Sugarloaf Mountain has a trail for everyone. Its a perfect afternoon of fun for the whole family hiking the trails and enjoying nature at its best. Rock climbers, incredible views, the mystery of Pontiac Point, wild flowers, salamanders, butterflies, places to sit and read a book, hidden treasures (geocaching) and friends are just a few of the things you might experience while hiking a trail on Sugarloaf Mountain.



**Rock Climbers**

**Incredible Views**



**Salamander**



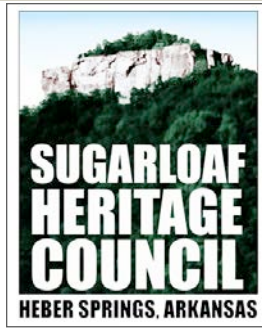
**Mystery of Pontiac Point**



**Geocaching**



**Friends**



*If you would like to be a part of Sugarloaf Heritage Council and support their efforts of sustaining the beauty and history of Sugarloaf Mountain please consider joining as an annual member or sponsor.*

Family membership \$35 annually

Individual membership \$20 annually

Student membership \$5 annually

Peak Sponsor (\$5000 annual minimum)

Summit Sponsor (\$2500 annual minimum)

Ascent Sponsor (\$1000 annual minimum)

Trailhead Sponsor (\$500 annual minimum)

Approach Sponsor (\$250 annual minimum)

Vista Sponsor (In kind donations)

[www.sugarloafheritagecouncil.org](http://www.sugarloafheritagecouncil.org)

501-362-5858 - Mark Johnson

[mjohnson9@suddenlink.net](mailto:mjohnson9@suddenlink.net)

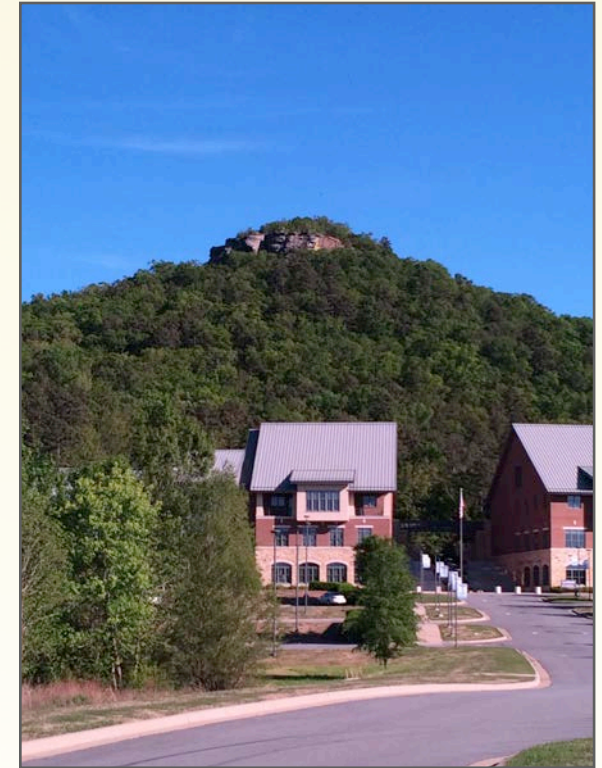
Membership/Sponsor checks may be mailed to:

**Sugarloaf Heritage Council**

**P.O. Box 87,**

**Heber Springs, AR 72543**

# SUGARLOAF MOUNTAIN TRAILS



*Sugarloaf Mountain is located east of Heber Springs on Highway 110E and sits behind the beautiful ASU-Heber Springs campus.*

*Whether you choose a sunrise, a sunset or a sunny day, the view is sure to please you at the top of*

*Sugarloaf Mountain. It's well worth the climb.*



## Brief History

*In the fall of 2007, local citizens and ASU-Heber Springs personnel joined together to form the Sugarloaf Heritage Council to restore and enhance Sugarloaf Mountain in Heber Springs, Arkansas.*

*The mountain's graffiti-covered faces and deteriorated historic Summit Trail have been cleaned and restored since then through the efforts of many volunteers (both from the community and from the University). Grants, membership fees, sponsorships and ASU-Beebe have been a part of the funding of these projects.*

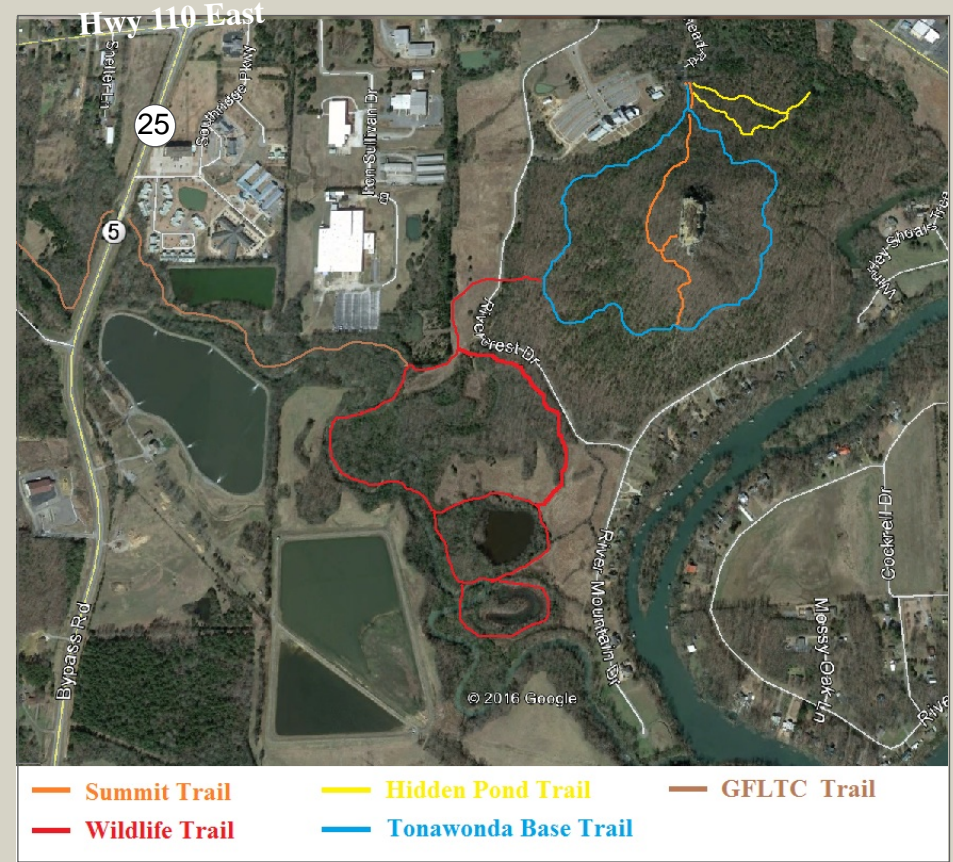


## Whats Next...

Sugarloaf Heritage Council is moving forward with the **Master Plan** to build a 1 mi. wildlife trail in the bottoms area west of Sugarloaf Mountain.(red trail on map) This trail will join the proposed 11 mile Sulphur Creek Trail heading west into Heber Springs. Sulphur Creek Trail is a project of Greers Ferry Lake Trails Council and the City of Heber Springs. Graffiti removal is always ongoing.

## The Sugarloaf Heritage Council in partnership with ASU-Heber Springs have completed three trails.(see map below)

The **Summit Trail** (.66 mi. round trip) which leads you to the base of the summit is the most difficult to negotiate because it is quite steep. There are, however, rest areas along the way.



The newest trail is the **Tonawonda Base Trail**, meandering (1.3 mi. long) around the base of the mountain. It is of moderate difficulty with some small hills and occasional uneven footing. Benches have been installed along the way.



The **Hidden Pond Trail** (.25 mi. to pond) is easy, being relatively flat and paved, with good footing and a picnic table near the pond. There is also a 90 foot wooden bridge with seating along the way.

